

CBT4, CBT6

Specifications					CBT4	CBT6
Identification	1.1	Manufacturer			Toyota	Toyota
	1.2	Model			CBT4	CBT6
	1.3	Drive			Electric	Electric
	1.4	Operator type			Sit-on	Sit-on
	1.5	Load capacity/rated load	Q	kg	4000	6000
	1.7	Rated drawbar pull	F	N	980	1470
	1.9	Wheelbase	y	mm	1360	1360
Weight	2.1	Service weight		kg	970	1035
	2.2	Axle load, with load, front/rear		kg	—	—
	2.3	Axle load, without load, front/rear		kg	330/650	360/695
Tyres	3.1	Tyre - pneumatic (P), pneumatic shaped cushion (SE), solid rubber (R)			P	P
	3.2	Tyre size, front			3.50-5-6PR	3.50-5-6PR
	3.3	Tyre size, rear			4.00-8-6PR	4.00-8-6PR
	3.5	Wheels, number front/rear (x = driven wheels)			2/2x	2/2x
	3.6	Track width, front	b ₁₀	mm	260	260
	3.7	Track width, rear	b ₁₁	mm	805	805
	Dimensions	4.8	Seat height/stand height	h ₇	mm	860
4.12		Coupling height	h ₁₀	mm	305	305
4.17		Overhang	l ₅	mm	360	360
4.19		Overall length	l ₁	mm	2020	2020
4.21		Overall width	b ₁	mm	965	965
4.32		Ground clearance, centre of wheelbase	m ₂	mm	80	80
4.35		Turning radius	W _a	mm	1775	1775
Performance data	5.1	Travel speed, with/without load		km/h	9 ¹⁾ /13,5	13 ²⁾ /18
	5.6	Max. drawbar pull, with/without load		N	3920	4410
	5.8	Max. gradeability, with/without load		%	6 ¹⁾ /36	3 ²⁾ /32
	5.10	Service brake			Hydraulic	Hydraulic
Electric motor	6.1	Drive motor rating S2 60 min		kW	2,6	4,9
	6.4	Battery voltage, nominal capacity K _s		V/Ah	48/240	48/240
	6.5	Battery weight		kg	450	450
Other	8.1	Type of drive control			Transistor chopper	Transistor chopper
	8.4	Sound level at driver's ear according to EN 12053		dB(A)	71	69

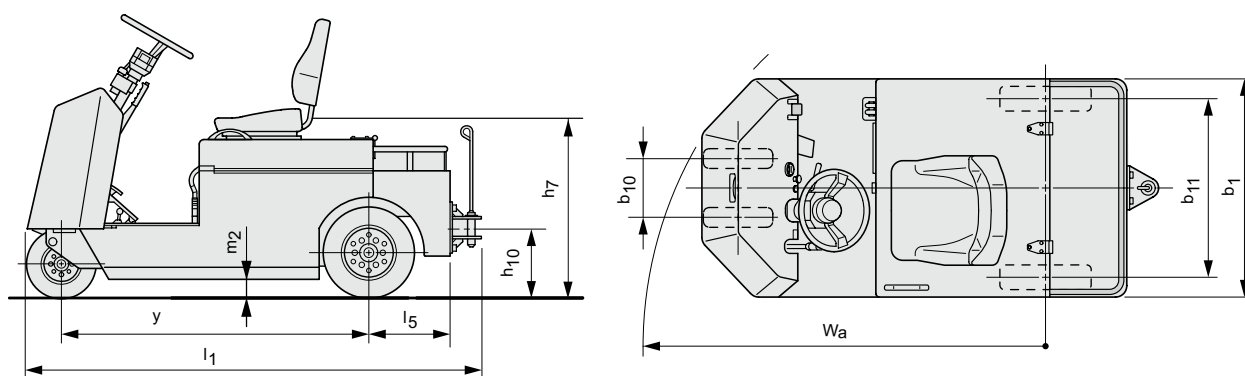
1) With 2 ton load.

2) With 3 ton load.

Towed weight

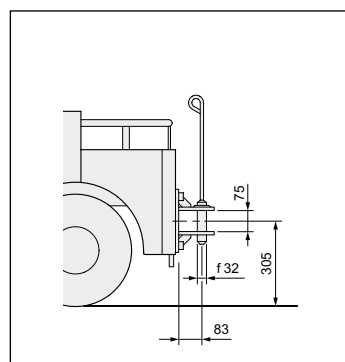
Model		CBT4	CBT6	CBT4	CBT6
Surface condition (dry even concrete)		3-minute rating		60-minute rating	
Start, level road	ton	4,0 (7)	6,0 (7)	4,0 (7)	6,0 (7)
Start, 1 degree	ton	3,4 (4)	3,8 (4)	1,9 (7)	3,0 (7)
Start, 2 degrees	ton	2,7 (4)	3,0 (4)	1,0 (7)	1,8 (7)
Start, 3 degrees	ton	2,2 (4)	2,4 (4)	0,5 (7)	1,1 (7)
Start, 4 degrees	ton	1,7 (4)	2,0 (4)	0,2 (7)	0,6 (7)

() Indicates travel speed in km/h.



Drawbar

Pin type single stage dawbar (standard).



Lever type single stage drawbar (optional).

