

8FB20

8FBH20

MAIN VEHICLE SPECIFICATIONS

(September 2016)

1	Manufacturer			TOYOTA	TOYOTA
2	Model			8FB20	8FBH20
3	Load Capacity		kg	2000	2000
4	Load Center		mm	500	500
5	Power Type			Battery	Battery
6	Operator Position			Rider Seated	Rider Seated
7	Tire Type		Front/Rear	Pneumatic	Pneumatic
8	Wheels (x = driven)		Front/Rear	2x/2	2x/2
9	Maximum Fork Height (MFH)		mm	3000	3000
10	Free Lift		mm	125	125
13	Fork Size		L x W x T	1070/120/36	1070/120/36
	Lateral Fork Adjustment		MAX./MIN.	1020/240	1020/240
14	Tilt Range		FWD/BWD	7/11	7/11
15	Length to Fork Face		mm	2240	2240
16	Overall Width		mm	1160	1160
17	Mast Lowered Height		mm	1975	1975
18	Mast Extended Height		mm	4220	4220
19	Overhead Guard Height		mm	2025	2105
21	Turning Radius (Outside)		mm	1980	1980
22	Load Distance (Centerline of front axle to front face of forks)		mm	420	420
	Rear Overhang		mm	320	320
23	Basic Right Angle Stacking Aisle Width (Add load length and clearance)		mm	2400	2400
	Intersecting Aisle Width		mm	1850	1850
24	Travel, Max. (FWD/RVS)	Full Load	km/h	14.5/14.5	14.5/14.5
		No Load	km/h	16.5/16.5	16.5/16.5
25	Speeds *	Lifting	Full Load	mm/sec	360
		No Load	mm/sec	600	600
26	Lowering	Full Load	mm/sec	500	500
		No Load	mm/sec	500	500
27	Drawbar Pull *	Full Load/ No Load	3-Minute Ratings	N (kg)	11260/10640 (1140/1080)
			5-Minute Ratings	N (kg)	11260/10640 (1140/1080)
			60-Minute Ratings	N (kg)	4710/4900 (480/500)
29	Gradeability *	Full Load/ No Load	3-Minute Ratings	% (tan θ)	22/23
			5-Minute Ratings	% (tan θ)	22/23
			30-Minute Ratings	% (tan θ)	15/22
32	Total Weight		Without Battery	kg	2570
33	Weight Distribution (With STD Battery)	Full Load	Front	kg	4790
			Rear	kg	530
34		No Load	Front	kg	1560
			Rear	kg	1760
35	Number		Front/Rear		2/2
36	Tires	Front			21X8-9-14PR (I)
37		Size			18X7-8-14PR (I)
38	Wheelbase		mm	1500	1500
39	Tread		Front	mm	970
			Rear	mm	940
	Backrest Height		mm	1220	1220
	Overhead Guard Clearance		mm	1035	1035
	Counterweight Height		mm	1100	1135
	Drawbar Height		mm	425	425
	Step Height/Floor Height		mm	435/620	435/700
40	Underclearance	Mast (Full Load)		mm	70
41		Center of Wheelbase (Full Load)		mm	90
		Drive Axle (Full Load)		mm	70
		Steer Axle (No Load)		mm	120
		Counterweight (No Load)		mm	115
		Minimum Under Clearance (Full Load)		mm	70(Mast)
	Grade Clearance		Frame	% (tan θ)	25
			Counterweight	% (tan θ)	56
42	Brake		Service (Foot)		Hydraulic
43			Parking		Hand
45	Battery	Voltage/Capacity	STD	V/AH	48/450
		(5-hour rating)	High	V/AH	48/600
46	Weight (STD Capacity Type)		kg	750	1160
47	Drive		kW	10.7	10.7
48	Electric Motors		Load Handling	kW	12.2
			Energy Consumption According to VDI Cycle **	kWh/h	4.1
54	Control Type		Drive		Transistor inverter
			Load Handling		Transistor inverter
57	Operating Pressure		For Attachments	Mpa (psi)	14.7(2100)

Sound level at the driver's ear according to EN12053 Uncertainty 4dB(A)	dB(A)	67	67
Vibration in accordance with in EN13059	m/s ²	1.5	1.5

NOTE: * Computed values.

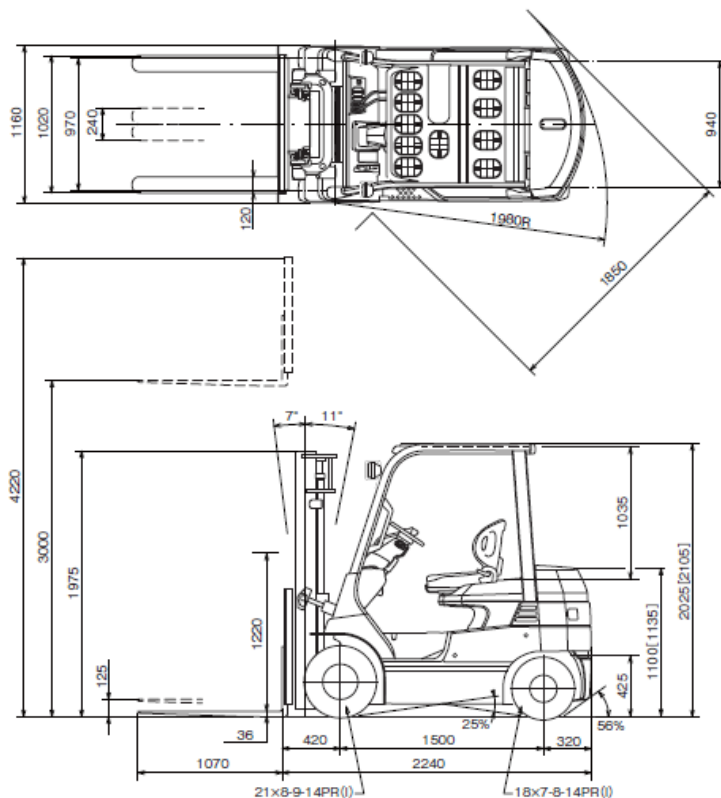
** 60 VDI circles/h with Tested Load of 2000 kg.

DIMENSIONAL DRAWINGS

(September 2016)

Unit: mm

8FB20/8FBH20



UNDERCLEARANCE

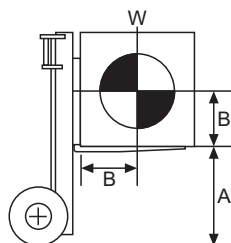
Mast (Full Load)-----	70
Center of Wheelbase (Full Load)-----	90
Drive Axle (Full Load)-----	70
Steer Axle (No Load)-----	120
Counterweight (No Load)-----	115
Minimum Underclearance (Full Load)---	70(Mast)

NOTE: [] for 8FBH20

RATED CAPACITIES

(September 2016)

8FB20/8FBH20



A: Max. Fork Height
B: Load Center
W: Capacity

V, FV Mast

Unit: kg (W)

A (mm)	3000	3300	3500	3700	4000	4500	5000	
B (mm)	500	2000	2000	2000	2000	2000	1900	1650 <1800>
	600	1800	1800	1800	1800	1800	1710	1480 <1620>
	700	1640	1640	1640	1640	1640	1560	1350 <1470>
	800	1500	1500	1500	1500	1500	1430	1240 <1350>
	900	1390	1390	1390	1390	1390	1320	1150 <1250>
	1000	1290	1290	1290	1290	1290	1230	1060 <1160>
	1100	1210	1210	1210	1210	1210	1150	990 <1080>
	1200	1130	1130	1130	1130	1130	1070	930 <1020>
	1300	1070	1070	1070	1070	1070	1010	880 <960>

FSV Mast

Unit: kg (W)

A (mm)	3700	4000	4300	4500	4700	5000	5500	6000	
B (mm)	500	1900	1900	1850	1800	1800	1550 <1750>	1200 <1700>	900 <1500>
	600	1710	1710	1670	1620	1620	1400 <1580>	1080 <1530>	810 <1350>
	700	1560	1560	1520	1480	1480	1270 <1440>	990 <1400>	740 <1230>
	800	1440	1440	1400	1360	1360	1170 <1320>	910 <1290>	680 <1130>
	900	1330	1330	1300	1260	1260	1090 <1230>	840 <1190>	630 <1050>
	1000	1240	1240	1210	1170	1170	1010 <1140>	780 <1110>	580 <980>
	1100	1160	1160	1130	1100	1100	940 <1070>	730 <1040>	550 <910>
	1200	1090	1090	1060	1030	1030	890 <1000>	690 <970>	510 <860>
	1300	1030	1030	1000	970	970	840 <940>	650 <920>	480 <810>

NOTE: <> for dual tire models.

SPECIAL TREAD

(September 2016)

Model		8FB20/8FBH20		
Front Tire	Single/Dual	Single	Single	Dual
Front Tire Size		21x8-9-14PR (I)	23x9-10-16PR (I)	6.00-9-10PR (I)
Overall Width	mm	1160	1220	1480
Tread, Front	mm	970	990	1130

SPECIAL MAST

(September 2016)

Wide Visible Mast (V), Wide Visible Full-Free Lift Two-Stage Mast (FV), Wide Visible Full-Free Lift Three-Stage Mast (FSV)

Model		8FB20/8FBH20												
Type of Mast		V				FV				FSV				
PERFORMANCE														
Power Mode		H	P	S	E	H	P	S	E	H	P	S	E	
Speeds	Lifting	Full Load	mm/sec	360	270	270	245	330	250	250	245	330	250	245
		No Load	mm/sec	600	500	500	465	570	480	480	440	570	480	440
	Lowering	Full Load	mm/sec	500	500	500	500	480	480	480	480	480	480	480
		No Load	mm/sec	500	500	500	500	420	420	420	420	450	450	450

DIMENSIONS

Load Distance (Centerline of front axle to front face of forks)	mm	420	420	450
--	----	-----	-----	-----

NOTE: H High power mode / P Power mode / S Standard mode / E Eco mode

MAST SPECIFICATIONS & RATED CAPACITIES

(November 2017)

Wide Visible Mast (V), Wide Visible Full-Free Lift Two-Stage Mast (FV), Wide Visible Full-Free Lift Three-Stage Mast (FSV)

8FB20/8FBH20

Mast Type	Maximum Fork Height	Overall Height			Free Lift		Single Tire			Dual Tire		
		* Lowered	Extended		Without Load Backrest	With Standard Load Backrest	Tilt Range		Load Capacity at 500 mm LC	Tilt Range		Load Capacity at 500 mm LC
			Without Load Backrest	With Standard Load Backrest			FWD	BWD		FWD	BWD	
mm	mm	mm	mm	mm	mm	deg	deg	kg	deg	deg	kg	
V	2500	1725	3170	3720	125	125	7	11	2000	7	11	2000
	2700	1825	3370	3920	125	125	7	11	2000	7	11	2000
	3000	1975	3670	4220	125	125	7	11	2000	7	11	2000
	3300	2125	3970	4520	125	125	7	11	2000	7	11	2000
	3500	2225	4170	4720	125	125	7	11	2000	7	11	2000
	3700	2385	4370	4920	125	125	7	11	2000	7	11	2000
	4000	2575	4670	5220	125	125	7	11	2000	7	11	2000
	4500	2825	5170	5720	125	125	7	5	1900	7	5	1900
	5000	3075	5670	6220	125	125	7	5	1650	7	5	1800
FV	3000	1975	3605	4220	1370*	755*	7	11	2000	7	11	2000
	3300	2125	3905	4520	1520*	905*	7	11	2000	7	11	2000
	3500	2225	4105	4720	1620*	1005*	7	11	2000	7	11	2000
	3700	2385	4305	4920	1780*	1165*	7	11	2000	7	11	2000
	4000	2575	4605	5220	1970*	1355*	7	11	2000	7	11	2000
FSV	3700	1775	4345	4920	1130*	555*	7	5	1900	7	5	1900
	4000	1875	4645	5220	1230*	655*	7	5	1900	7	5	1900
	4300	1975	4945	5520	1330*	755*	7	5	1850	7	5	1850
	4500	2045	5145	5720	1400*	825*	7	5	1800	7	5	1800
	4700	2125	5345	5920	1480*	905*	7	5	1800	7	5	1800
	5000	2225	5645	6220	1580*	1005*	7	5	1550	7	5	1750
	5500	2385	6145	6720	1740*	1165*	7	5	1200	7	5	1700
	6000	2575	6645	7220	1930*	1355*	7	5	900	7	5	1500

NOTE: Height of standard load backrest is 1220 mm.

* with optional tire size ; 23×9-10-16PR (I), plus 20 mm.